

ShowProfile 4

Image Optimization for Color Management

- Display detailed ICC-Profile information from images
- Extract and remove ICC-Profiles from images
- Embed and reference ICC-Profiles
- Exchange and replace ICC-Profiles
- Mac OS X, Windows, Solaris and Linux



Overview

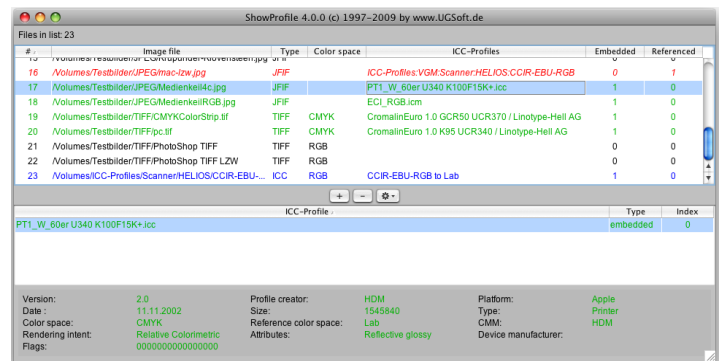
In color management workflows ICC-Profiles are used to describe the color capabilities of input and output devices, such as scanners, digital cameras, monitors and printers. These profiles are inserted into (tagged to) image files in order to produce best quality monitor and printer output by calculating the output colors based on devices' capabilities. The better a profile describes its corresponding device capabilities, the better the output will be. Unfortunately there are several standard profiles available which only describe devices unexactly. In case such a profile was tagged to an image it might be necessary to remove or replace the profile before the output takes place. In order to save time and keep image quality this will be done using ShowProfile without modifying the original image data.

ICC-Profiles are tagged to images by hand, e.g. with image editors, or automatically by digital cameras or when using a HELIOS ImageServer. Digital cameras as well as image editors do embed profiles by value. The HELIOS ImageServer additionally offers tagging by reference, i.e. the image file just contains a reference to the original ICC-Profile on the file system.

Tagging by reference is the preferred method when working with an ImageServer because this will save disk space and ensures always the same profile is used. On the other hand, in case an ICC-Profile tagged by reference is not available on the ImageServer or the reference path points to a not suitable profile, a corresponding error message will be displayed just before the output starts or the output will have poor quality. Thus, before the output starts it is good practice to use ShowProfile to check whether images contain any unresolved profile references in order to adjust the reference path or to request the required ICC-Profiles.

Features

- Examine embedded ICC-Profile information
- Examine referenced ICC-Profile information
- Check availability of referenced ICC-Profiles
- Save protocol to file
- Extract ICC-Profiles from images for further use
- Remove embedded ICC-Profiles from images
- Remove referenced ICC-Profiles from images
- Tag ICC-Profiles to images by value (embedding)
- Tag ICC-Profiles to images by HELIOS reference
- Customize reference paths
- Exchange ICC-Profiles
- Replace ICC-Profiles
- No access to HELIOS ImageServer required
- No modification of original image data
- Keep original image quality and compression
- Command line calls for batch processing



System Requirements

- Mac OS X 10.4, 10.5, 10.6
- Windows XP, Vista, 7
- Solaris
- Linux
- Installed Java Runtime 1.4 or newer

Image/File Formats

- JFIF, JPEG, EXIF
- TIFF
- PICT
- ICC-Profile



Uwe Gohlke Software
Tel.: +49 511 56 37 697
Fax: +49 511 56 37 698

Email: info@ugsoft.de
Internet: www.ugsoft.de



ShowProfile 4 Order Form

Please copy and send a facsimile to: +49 511 56 37 698

UGSoft
Uwe Gohlke Software
Im Eichholz 8
D-30657 Hannover

Sender:

Company:	
Name:	
Street:	
ZIP/City:	
Tel./Fax:	
Email:	

Herewith I order:

Licenses	Product	Single Price €	Total €
	ShowProfile 4 Mac OS X	119,00	
	ShowProfile 4 Windows	119,00	
	ShowProfile 4 Solaris	119,00	
	ShowProfile 4 Linux	119,00	
	Update from ShowProfile 3 Mac OS X	69,00	
		Total:	

Prices incl. 19% German taxes (100,00+19,00=119,00€)(57,98+11,02=69,00€)

An additional license must be purchased for each computer where ShowProfile will be used.

Payment:

PayPal to pay@ugsoft.de

Eurocard/Mastercard

VISA Card

Card number: _____

Cheksum: _____ (last 3 digits from back of card)

Owner Name: _____

Expiration Date: _____

You will receive your ShowProfile license data via email to the above email address.

City/Date

Signature